

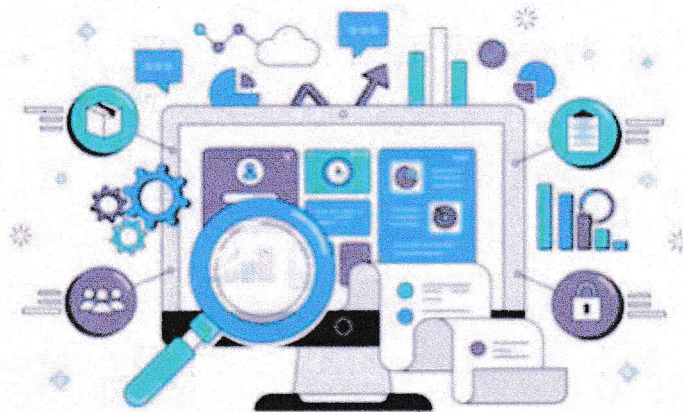


NOBLE WOMEN'S COLLEGE, MANJERI

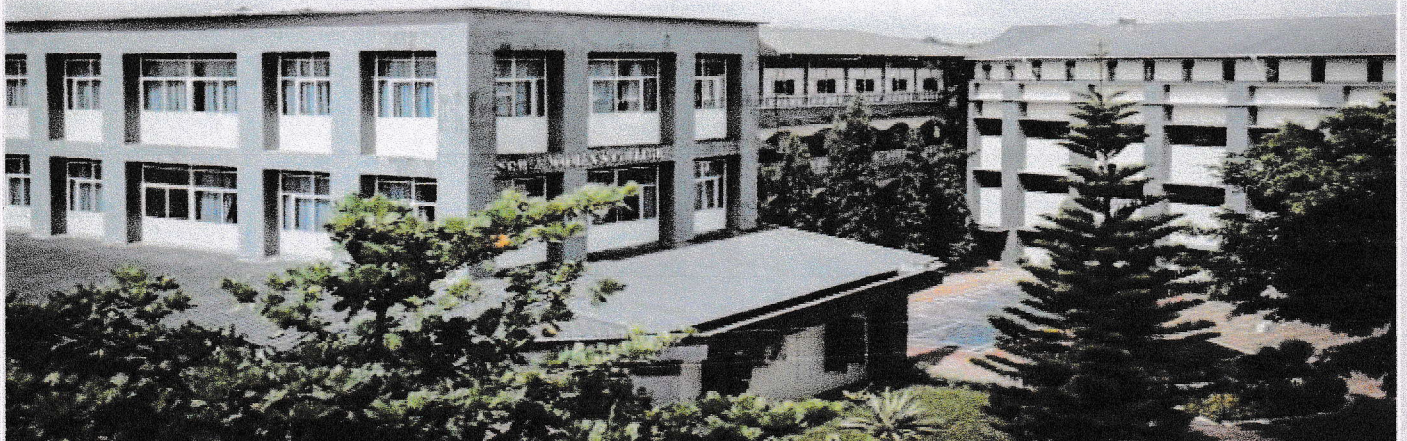
Affiliated to University of Calicut & Recognized by Govt. of Kerala

ISO 9001:2015 Certified Institution & Included in the 2(f) list of UGC

Vettekode, Pullancheri P.O, Manjeri- 676122 | 0483 2766364



RESOURCE MOBILIZATION POLICY





NOBLE WOMEN'S COLLEGE

MANJERI

Affiliated to University of Calicut & Recognized by Govt. of Kerala

An ISO 9001:2015 Certified Institution | Included in the 2(f) List of UGC

Noble Campus, Vettekode, Pullancheri P.O, Manjeri, 676122, Malappuram Dist., Kerala

Tel/Fax : 0483 2766364 | Cell: 8943 147 989

Email: mail@naasmanjeri.org | Web: www.noblewomenscollege.edu.in

RESOURCE MOBILIZATION POLICY

The resource mobilization policy of a self-financing college involves strategies and approaches designed to generate funds and manage resources effectively to sustain and enhance the institution's operations, infrastructure, and academic offerings.

Major financial sources of the institution are:

- Tuition Fees and Hostel Fees
- Scholarships and Financial Aid
- Central/State Government funding for NSS
- PTA Funds and Alumni contributions
- Financial assistance from Management.
- Miscellaneous.

Tuition and Hostel Fee Structure: The tuition fee structure for various programmes offered by the college is fixed as per the norms prescribed by the Govt. and the affiliating university. The hostel fee is affordable in the minimum fee structure.

Scholarships and Financial Aid: Develop policies for scholarships, grants, and financial aid to attract students from diverse backgrounds and ensure accessibility to education. These may be need-based, merit-based, or specific to certain programs.

Fundraising Initiatives: Establish fundraising campaigns, Parent Teacher Association, alumni relations programs, and donor engagement strategies to solicit donations, endowments, and sponsorships from individuals, corporations, and foundations.



NOBLE WOMEN'S COLLEGE

MANJERI

Affiliated to University of Calicut & Recognized by Govt. of Kerala

An ISO 9001:2015 Certified Institution | Included in the 2(f) List of UGC

Noble Campus, Vettekode, Pullancheri P.O, Manjeri, 676122, Malappuram Dist., Kerala

Tel/Fax : 0483 2766364 | Cell: 8943 147 989

Email: mail@naasmanjeri.org | Web: www.noblewomenscollege.edu.in

Management financial assistance: The management provides financial assistance to host Research Promotional Programmes, Colloquiums, Workshops, Seminars, Association Activities, Faculty Development Programs (FDPs), etc..

Employee State Insurance (ESI) : provides ESI to the eligible staff as per regulations

Cost Optimization Measures: Implement measures to optimize operational costs, such as energy-efficient infrastructure, prudent financial management, and streamlining administrative processes to maximize resources.

Industry Partnerships and Collaborations: Foster partnerships with industries, businesses, and other educational institutions for research collaborations, internships, sponsored programs, and skill development initiatives, generating revenue and enhancing the curriculum.

Diversification of Revenue Streams: Explore avenues beyond tuition fees, such as renting out facilities for events, offering professional development courses, or licensing intellectual property developed within the college.

Asset Management: Efficiently manage the college's assets, including real estate, investments, and infrastructure, to generate income and ensure sustainability.

Budgeting and Financial Planning: Develop comprehensive budgeting processes and financial plans that align with the institution's strategic goals, ensuring transparency and accountability in resource allocation.

Continuous Review and Adaptation: Regularly evaluate the effectiveness of the resource mobilization strategies, adapt to changing market conditions, and revise policies as needed to meet evolving financial needs and challenges.

Compliance and Governance: Ensure adherence to legal and regulatory requirements concerning financial operations, governance, and reporting standards.



PRINCIPAL

NOBLE WOMEN'S COLLEGE

MANJERI, PIN: 676 122